
Board Meeting

Virtual School

Evergreening Update



May 2017

Virtual School Update



Vision Statement

To be leaders in providing *quality education* to *rural students* in a *dynamic learning environment*.

quality education  *rural students*  *dynamic learning*  *virtual school*

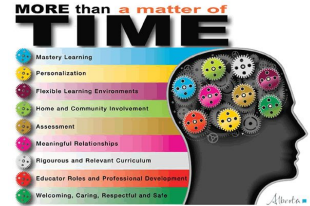
“LRSD Virtual School provides courses and educational programs which are delivered electronically to a student at a school site or off-site, under the instruction and supervision of a certificated teacher” *Virtual School Draft Admin Procedure 2017*

Virtual School Update

Moving Forward with High School Redesign

MRHRD is grounded in nine foundational principles:

- **Mastery Learning**
 - a. *Virtual school provides the opportunity the students to participate in content they would not usually have access to. (French, Spanish, Math 31)*
- **Rigorous and Relevant Curriculum**
 - a. *Virtual school content is driven by needs of students. Courses are created through the collaboration of dedicated professionals, Alberta Education and the Moodle Hub*
- **Personalization**
 - a. *The Virtual School personalizes the learning for:*
 - Students who want to take a course that is not offered at their home school*
 - Students who need to take a course that will not fit into their regular schedule*
 - Students who prefer to complete their program independently and at a self-directed pace.*
 - Students who need to retake a course*
 - Students who require assistance with credit recovery*
 - Students who are involved in high level sports or fine arts making regular school attendance difficult.*
- **Flexible Learning Environments**
 - a. *The Virtual school is open 24/7, learning has no fixed time, asynchronous learning model, flexibility is at the core*
- **Educator Roles and Professional Development**
 - a. *The Virtual School leverages the expertise of the Outreach Teachers providing professional learning in asynchronous course delivery*

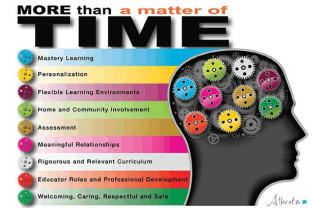


Virtual School Update

Moving Forward with High School Redesign

MRHRD is grounded in nine foundational principles:

- Meaningful Relationships
 - a. *Virtual school staff are in direct contact with the students both virtually and in person making the LRSD Virtual School unique*
 - b. *During flex or preps students can take the opportunity to meet with subject specific teachers at the school of residence*
- Home and Community Involvement
 - a. *Virtual School leaves the walls of traditional education to provide flexibility to reside at the student's home and community.*
- Assessment
 - a. *Assessments are designed by dedicated professional teaching staff from LRSD*
- Welcoming, Caring, Respectful and Safe Learning Environment
 - a. *By it nature the Virtual School provides a safe and caring learning environment for students*

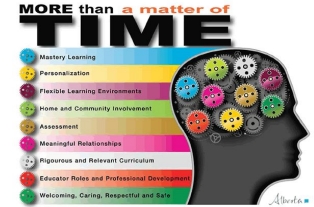


Virtual School Update

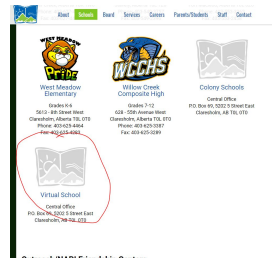
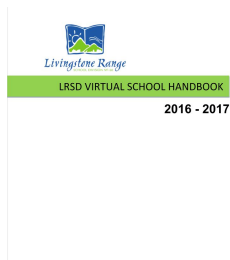


Who Can Register

- Any LRSD resident student may be eligible for admission to LRSD Virtual School depending on the availability of the program and the needs of the individual student.
- A student's decision to enroll in the Virtual school will be made in consultation with the resident school Principal.
- A student may request to enroll in an LRSD Virtual School course by contacting the administration or guidance counselor at their home school, contacting the nearest Outreach School or by contacting LRSD Virtual School directly. Upon approval of admission all parties will be informed.

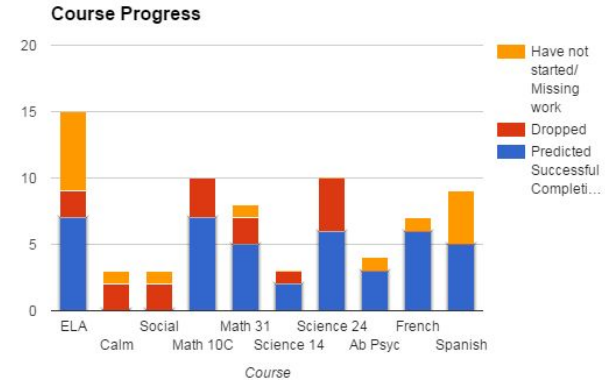
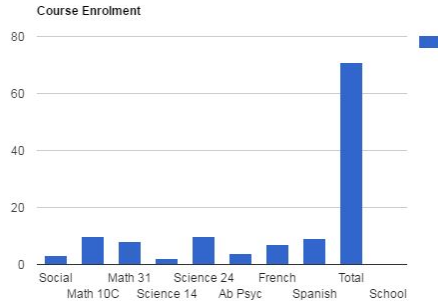


LRSD Virtual School Handbook/Homepage



Virtual School Update

The Data



Evergreening

Learning and Technology Policy Framework

The Learning and Technology Policy Framework (2013) describes Alberta Education's vision for the role of technology in education and establishes a set of Policy Directions for school authorities.



[LTPF Link](#)

Evergreening



Policy Direction 5: Access, Infrastructure and Digital Learning Environments

Access, Infrastructure and Digital Learning Environments: All students, teachers, administrators and other education professionals have access to appropriate devices, reliable infrastructure, high-speed networks and digital learning environments.

[LTPF Link](#)

Evergreening

Outcomes

Students, teachers, administrators and other education professionals have support for and equitable access to:

- a. devices and peripherals
- b. digital learning environments
- c. facilities designed to maximize learning with technology

[LTPF Link](#)

Evergreening

To ensure our schools have technology that is reliable and efficient, equipment evergreening principles have been adopted. The purposes of these principles are to provide:

- More consistency in hardware components
- A process for eliminating outdated equipment
- A minimum level of technology in schools

The evergreening plan clearly delineates process, schedules and timelines for all schools to plan for and acquire technology to support student learning. This plan is reviewed on a yearly basis to reflect current realities.

Approved Evergreen Budget, Years 5 through 8

Revised, April 2011

ITEM COSTS: Desktops \$1000, Laptops \$1100, Teacher Laptops \$1300, Printers \$500

2% will be over ordered each year for contingency planning.



Year	Schools	Details/# of Students	Details/# of Computers	# of Teachers	Budget
2015	JT Foster	204	51	12	
	Willow Creek Composite	459	115	27	
	WA Day	168	42	10	
	GR Davis	151	38	10	
	FP Walshe	392	98	22	
	MHHS	351	88	19	
	Livingstone	209	52	14	
Total		1934	484	114	\$330,000
2016					\$330,000
2017	AB Daley	230	58	15	
	Stavely	53	13	4	
	West Meadow	302	76	18	
	Granum	91	23	7	
	Canyon	327	82	18	
	Isabelle Sellon	143	36	9	
Year	Schools	Details/# of	Details/# of	# of Teachers	Budget

Technology Services Handbook		Students	Computers		Page 4R
	Horace Allen	160	40	8	
	Crowsnest Consolidated	318	80	15	
	FSL		10		
	Colonies	18	5	13	
Subtotal		1642	421	107	\$330,000
	Trustees		7		
	CO		25		
Subtotal		0	32	0	\$40,000
Total		1642	485	107	\$370,000
2018					\$330,000

Evergreening

Evergreening Principles

These principles were adopted following a formal technology review in 2010.

1. Technology is fully centralized, (considered a site).
2. Teacher / Student ratios are based on September 30 count of previous year.
3. 6 to 1 Student to computer ratio.
4. 1 to 1 Teacher to computer ratio.
5. 1 to 1 FTE School Administrative Assistant to computer ratio.
6. 1 to 1 Librarian to computer ratio.
7. Remaining dollars will be placed in an Innovation Technology Fund
8. End life of a computer/tablet/chromebook is 4 years from date of installation.
9. CTS/High end machines and tablets and equipment purchased in the 2 year innovative evergreen window will stay in place until they are 4 years old at which time they will be recycled at the end of that year.
10. Forklift Evergreening (includes all computers and printers in a school at the same time).
11. 1 Printer each for the lab(s), library and office, (1 could be colour).
12. Specific buying windows, once every four years per school for Evergreen Computers
13. Specific buying windows, once every two years per school for Innovative Evergreen equipment
14. Any approved school requests over and above the standard model of computer will be an additional cost to the school.
Sets of additional laptops or tablets or Chromebooks will require a CSA/UA certified storage and charging cart, (school cost).

Evergreening

Current Total for 2017

Staff Laptops = 150

Staff Laptop Docking Stations = 123

Student laptops = 220

Chromebook/ Laptop/Tablet Charging Carts = 17

Chromebook = 419

iPads = 103

Computer Desktops = 110

LCD Monitors = 123
