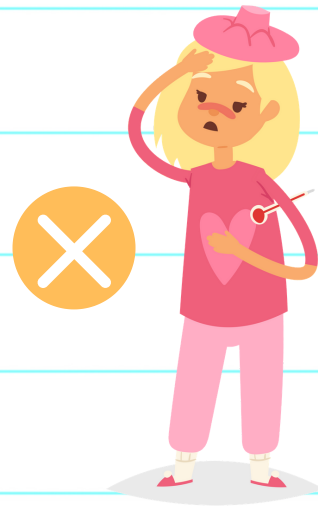


WHEN IS TOO SICK FOR SCHOOL?



SEND TO SCHOOL

- Runny nose or little cough but no other symptoms
- No fever for 24 hours
- No diarrhea or vomiting for 24 hours



KEEP AT HOME

- Temperature higher than 38°C after taking medicine
- Vomiting or diarrhea
- Eyes are pink/crusty



CALL THE DOCTOR

- Temperature higher than 38°C for 2+ days
- Vomiting or diarrhea for 2+ days
- Sniffles for 7+ days and not improving

