

# WELCOME TO THE Nanton Schools

# OPEN HOUSE

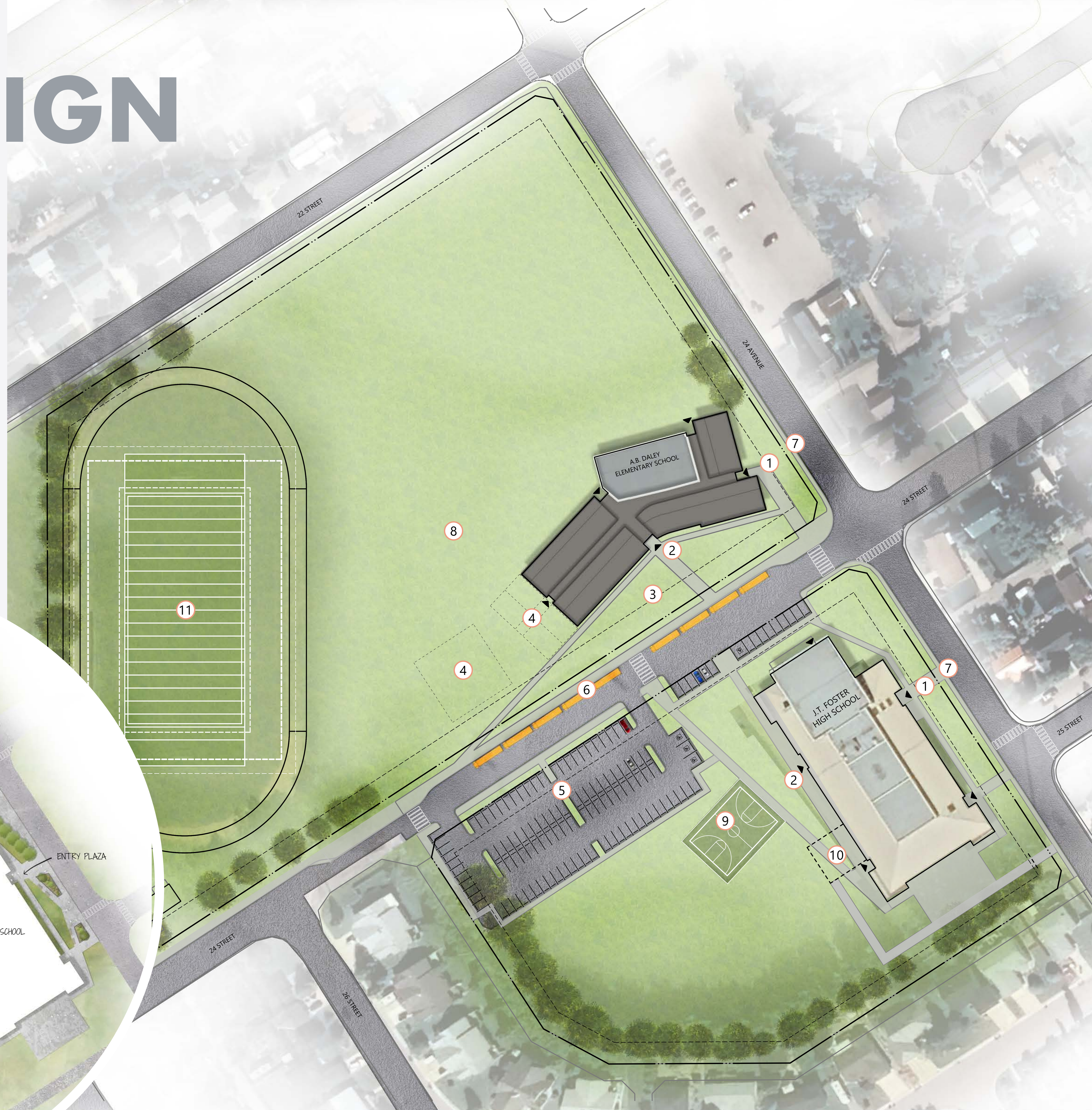
**INTENT:** With the goal of blending together a new AB Daley Elementary School and a modernized JT Foster High School, the proposed concept builds off of the existing site conditions by creating a shared internal street that flanks both buildings. To further this connection while still creating a story unique to each school, a contrasting conceptual story was embraced, with the elementary school centering around softness and fun and the high school visualized as more linear and structured.



# SITE DESIGN

## LEGEND:

- ① Main Entrance
- ② Primary Entrance
- ③ Plaza
- ④ Potential Expansion
- ⑤ Student/Staff Parking
- ⑥ Bus Drop Off
- ⑦ Parent Drop Off
- ⑧ Playground
- ⑨ Basketball Court
- ⑩ Fenced CTS Yard
- ⑪ Existing Track



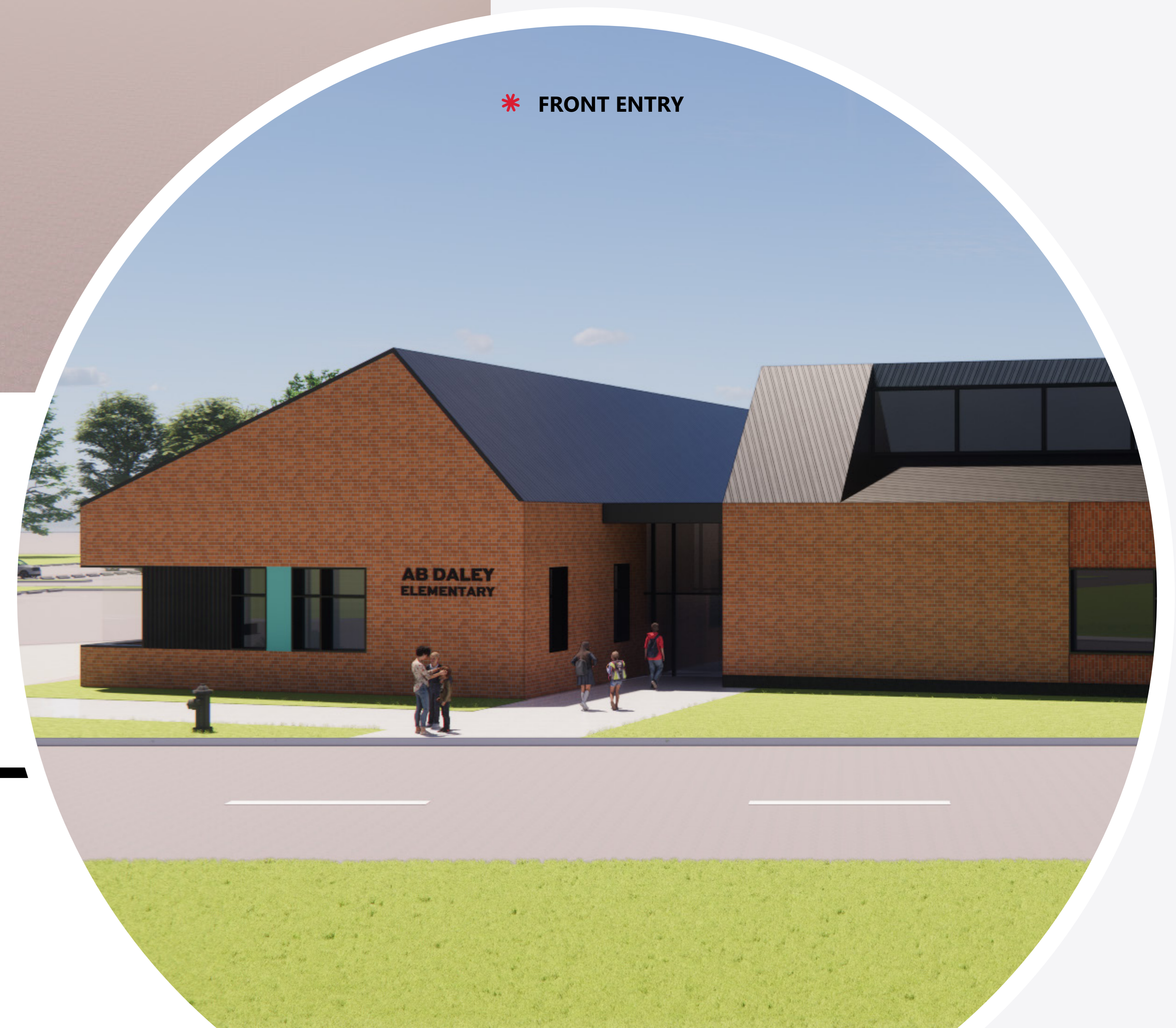
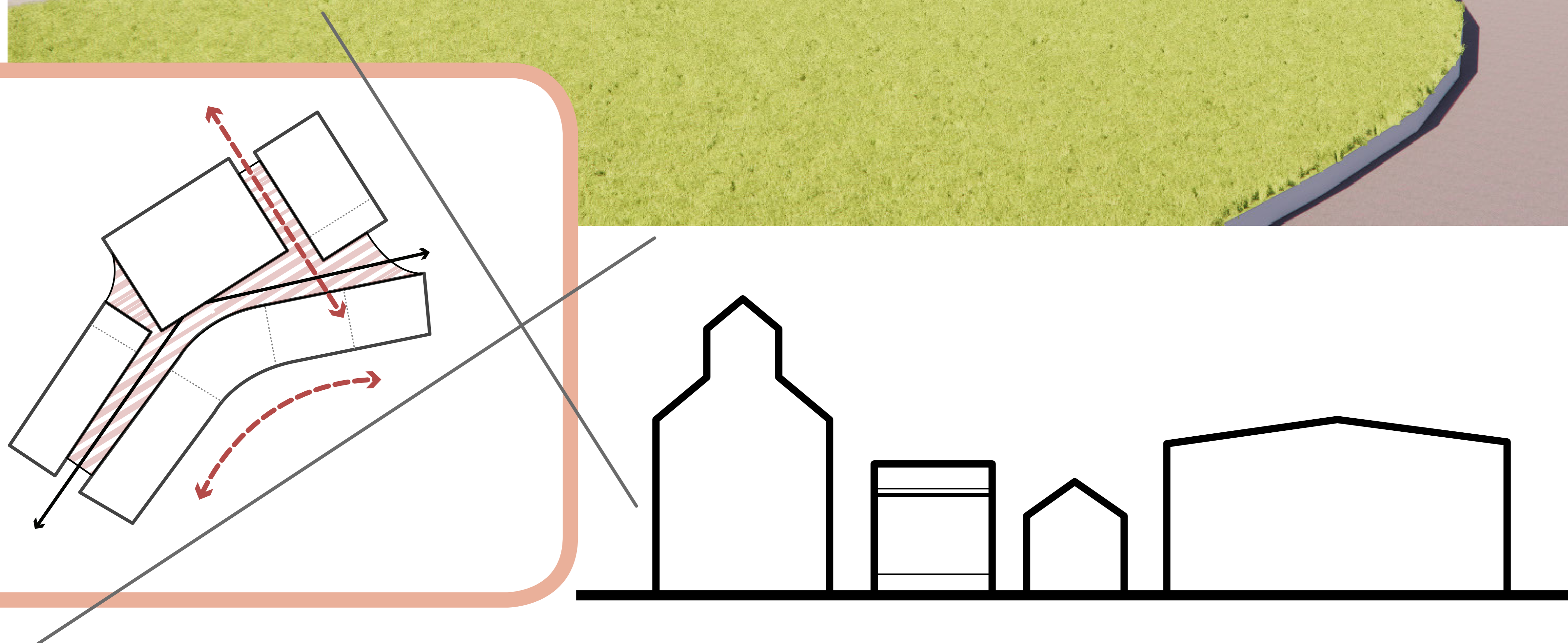
# ELEMENTARY SCHOOL

A.B. DALEY



## MASSING:

Building off of forms reminiscent of Nanton, the massing is intended to bring together functionally located spaces to form a village. Varying roof lines speak to forms seen throughout the town to form an arrangement of multiple masses, while levels of transparency point to uses occurring within.

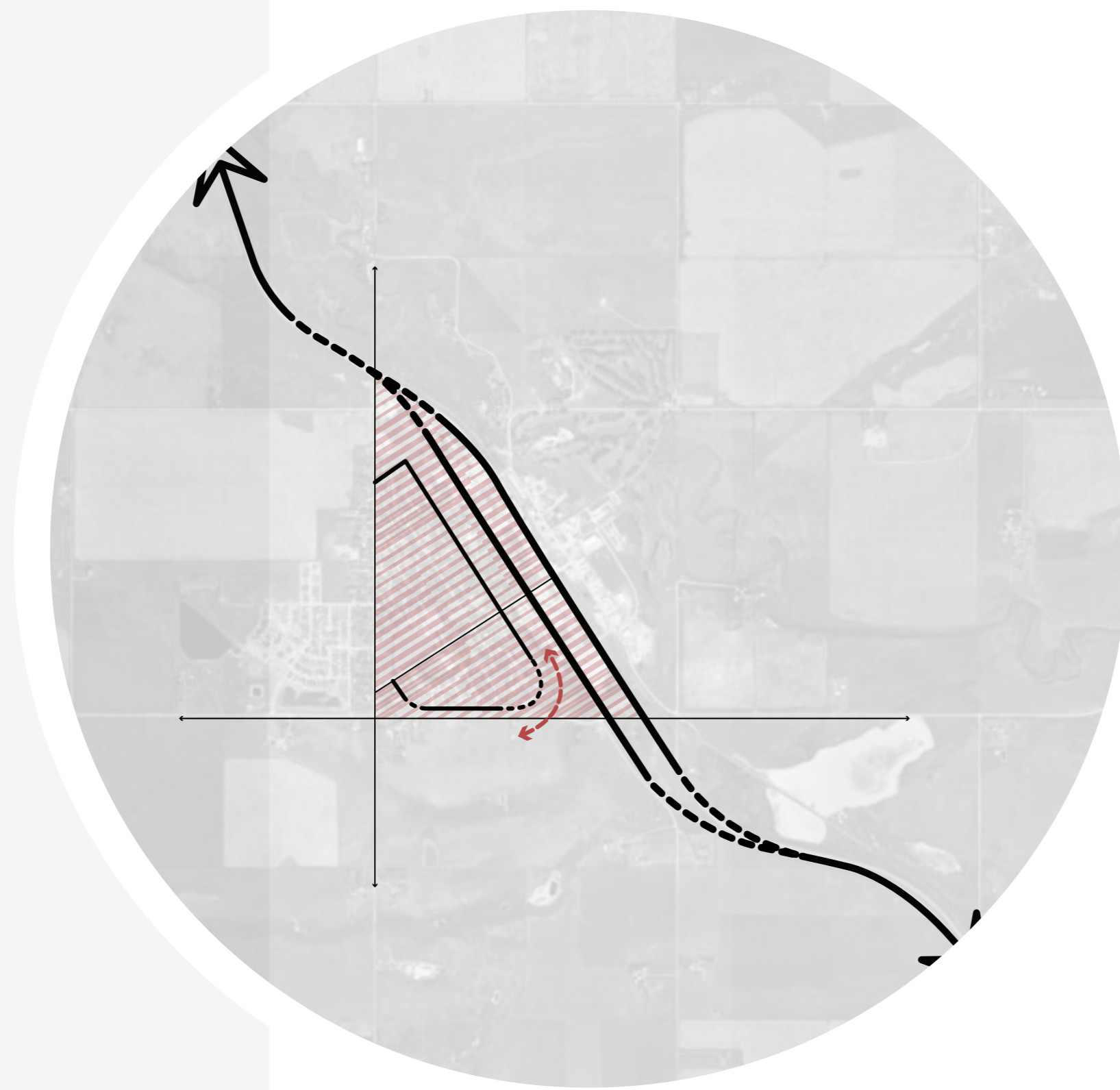


# ELEMENTARY SCHOOL

A.B. DALEY  
FLOOR PLAN

## CONCEPT:

To develop a language reflective of Nanton, the floor plan for the newly built AB Daley elementary school builds off of the town's unique grid patterns. Soft moments contrasted by rigid moments come together to establish a layout of spaces clustered by use. A central vertical corridor, curves towards the re-aligned street forming a forecourt and establishing a point of entry.

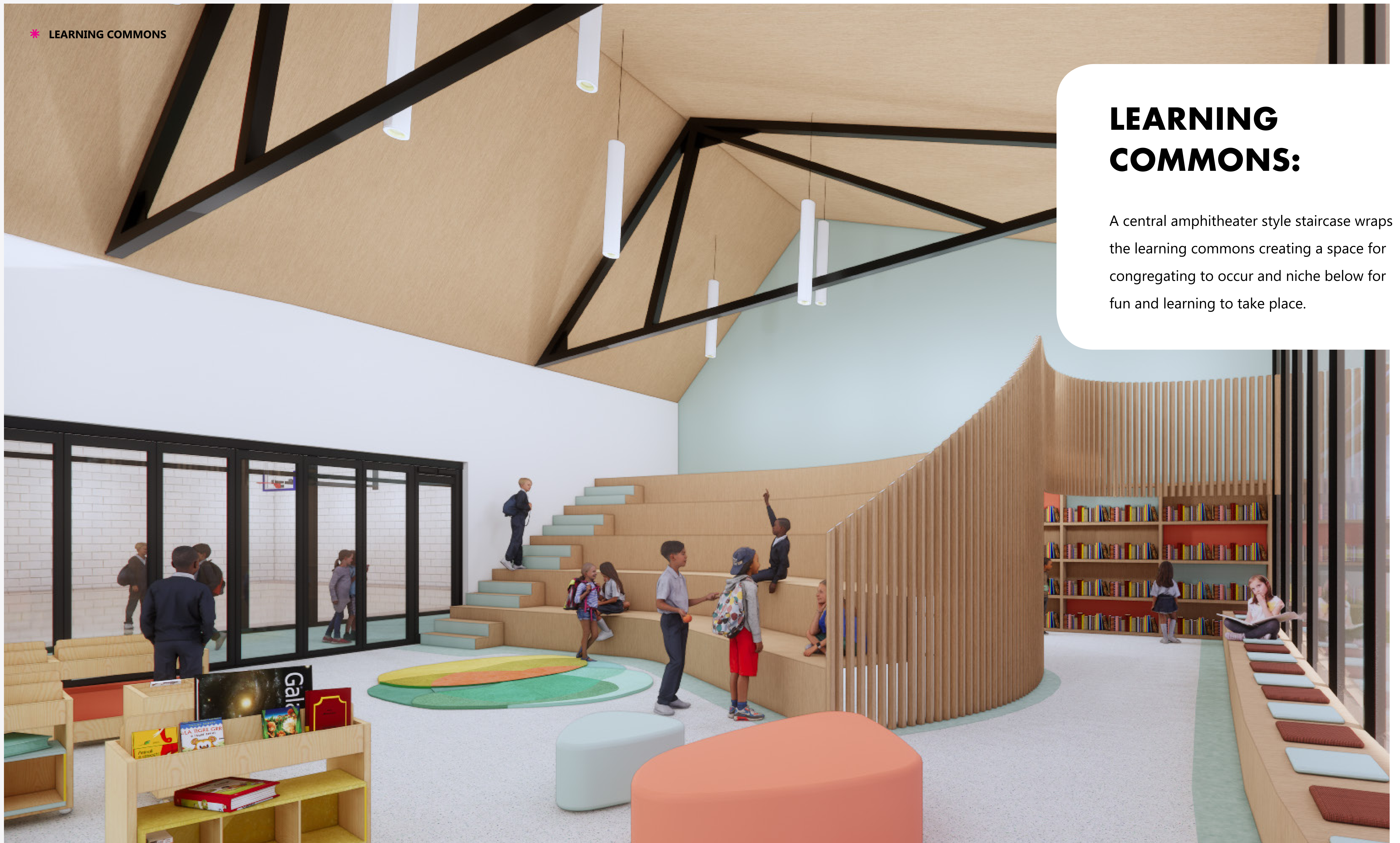


- TEACHING
- ADMIN
- LIBRARY
- SPORTS
- SUPPORT



# ELEMENTARY SCHOOL

A.B. DALEY  
CONCEPT IMAGES



\* LEARNING COMMONS

## LEARNING COMMONS:

A central amphitheater style staircase wraps the learning commons creating a space for congregating to occur and niche below for fun and learning to take place.

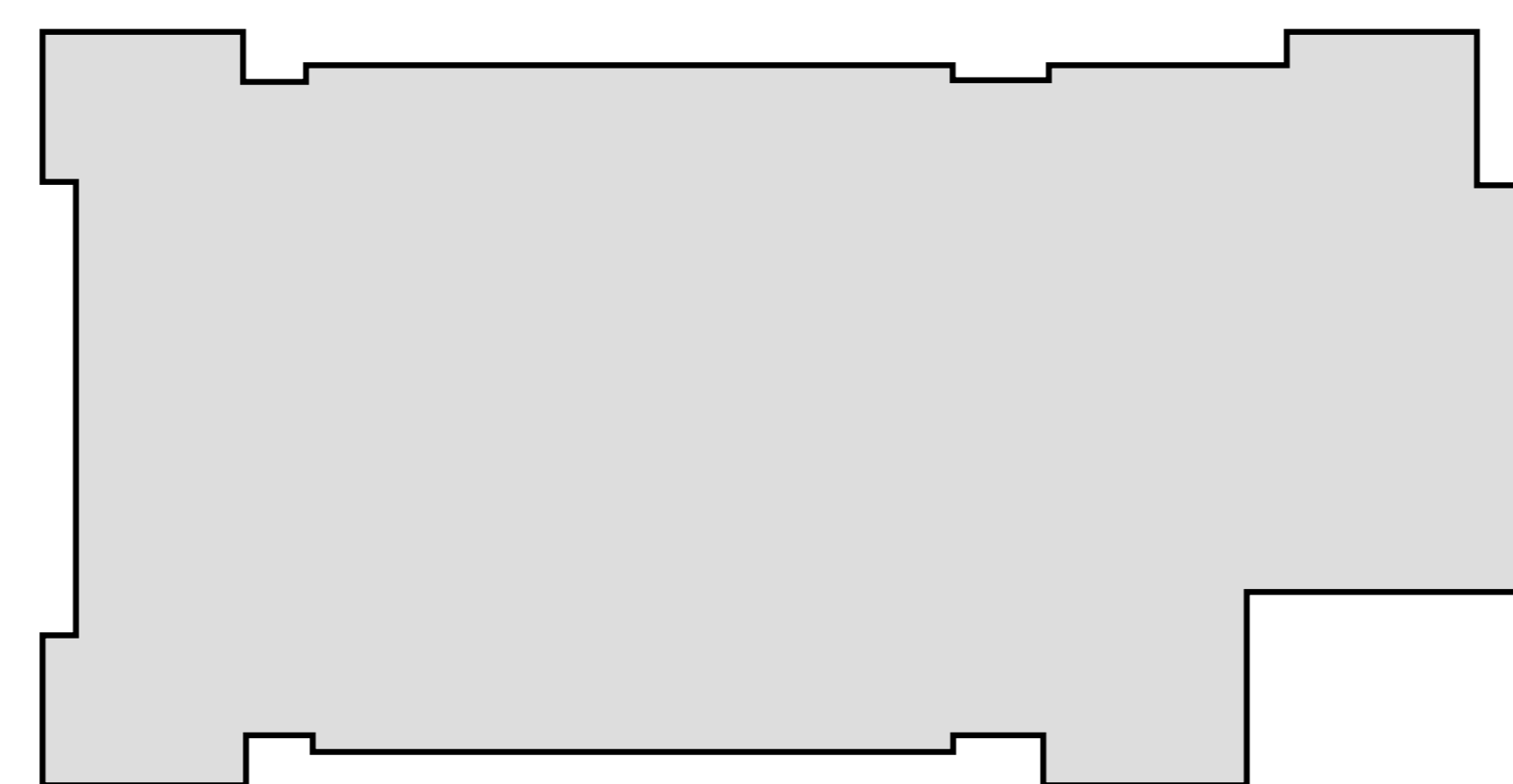
# HIGH SCHOOL

J.T. FOSTER

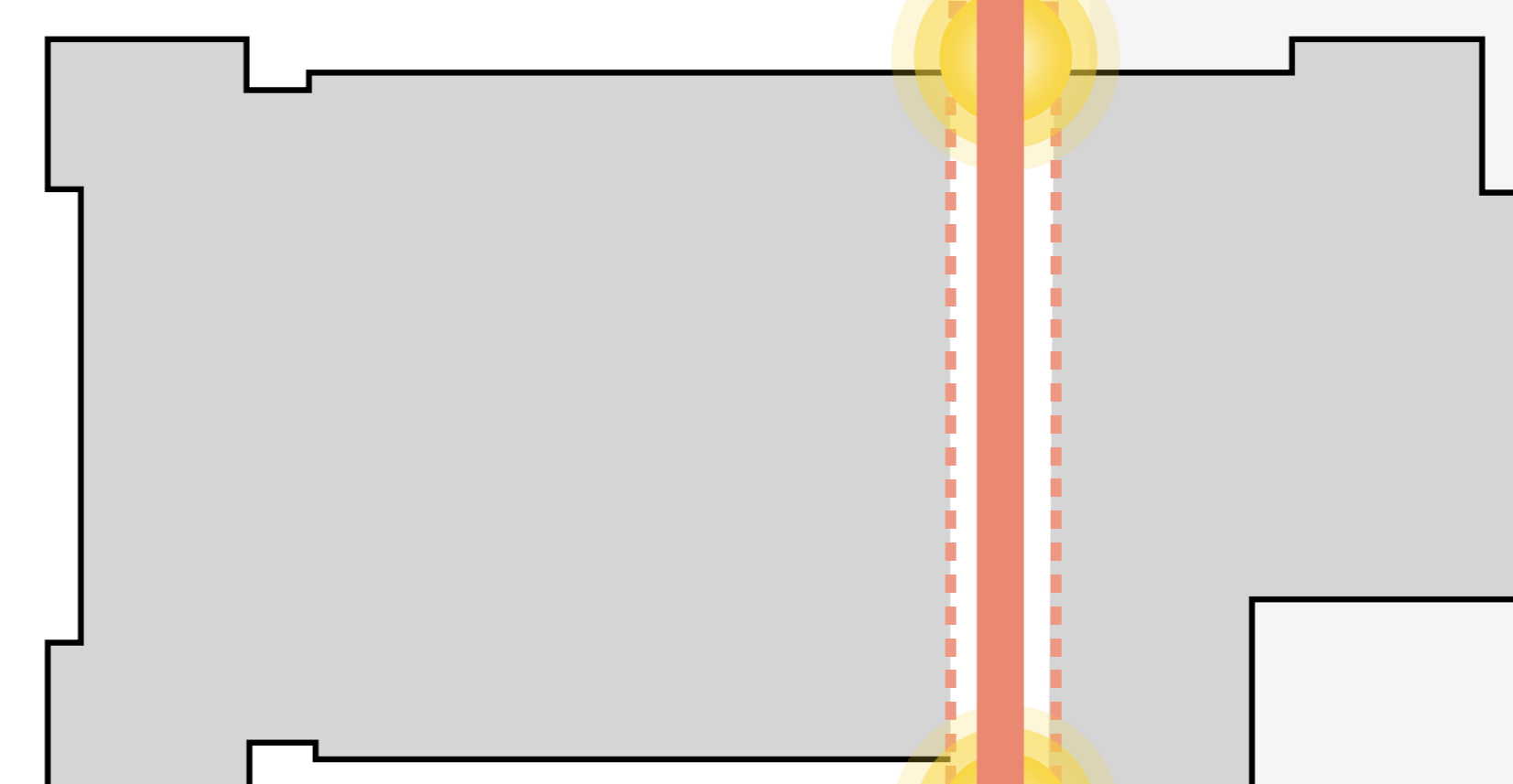


## MASSING:

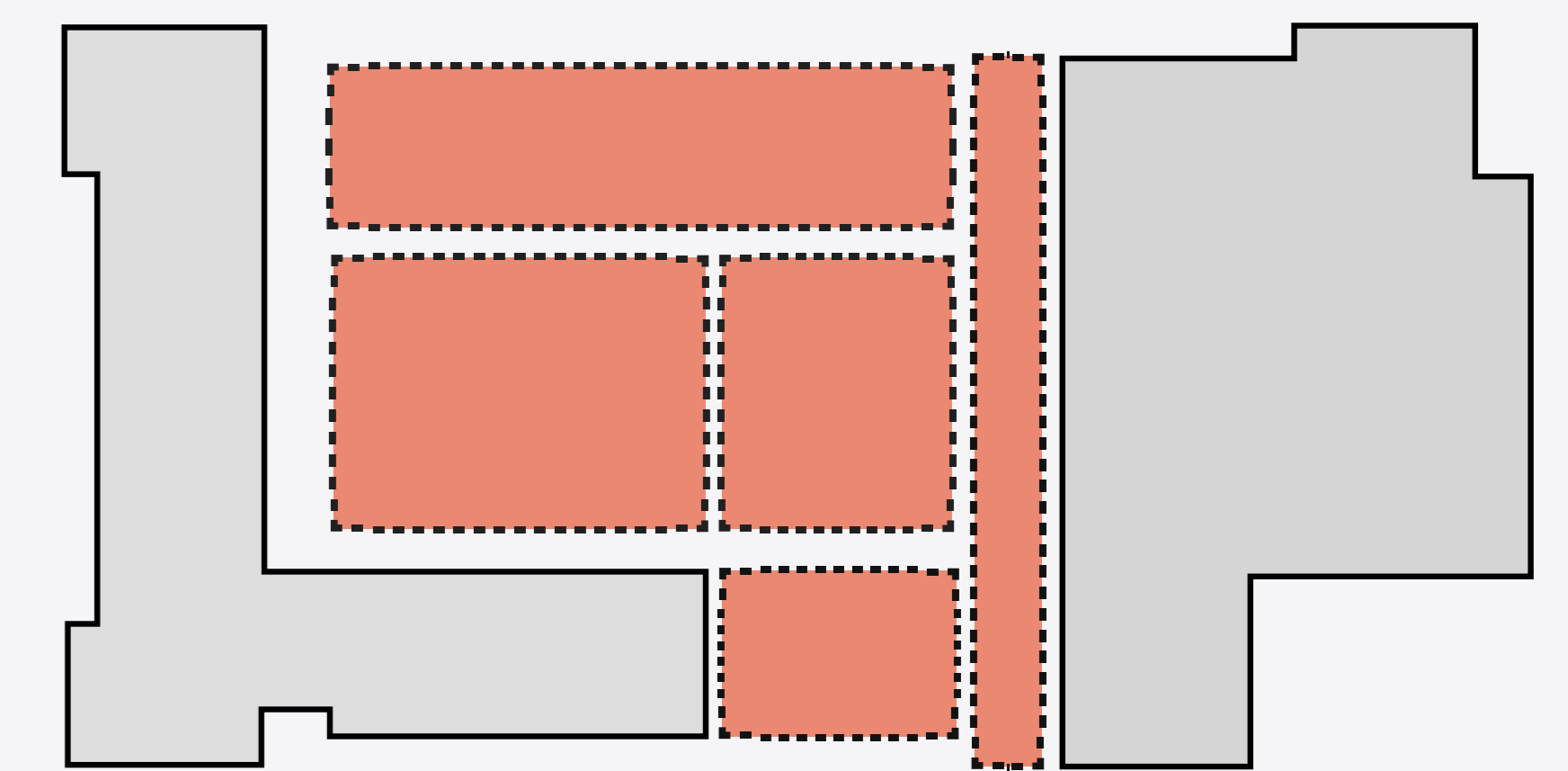
To maintain the unique qualities of the existing school, the massing design centers around a story of old and new. In contrast to the buildings existing sympathetic roof line, geometric forms with a high degree of transparency have been utilized.



Existing condition



Create central main street and enhanced entry conditions



Reconfigure pieces of old & new

# HIGH SCHOOL J.T. FOSTER FLOOR PLANS

## CONCEPT:

Coming together to create a cohesive whole, the proposed plan for JT Foster brings together pieces of the old and pieces of the new to form a new central main street. Existing functional corridors intersect the main street axis maintaining a grid for required spaces to be laid out within.

- TEACHING
- CTS
- ADMIN
- LIBRARY
- SPORTS
- SUPPORT



\* View from here



# HIGH SCHOOL

J.T. FOSTER  
CONCEPT IMAGES



## MAIN STREET:

Visual connections have been created to increase the functionality of the schools central social space. A social stair acts as a place for conversing and viewing activities occurring within the gym while a folding glass door into the learning commons furthers the consecutiveness of the space.



\* SOCIAL SPACE & GYM VIEWING



\* GYMNASIUM