

> DUAL CREDIT SACI GUIDEBOOK 2024/2025

LEARN MORE AT

lethpolytech.ca/dual-credit

SOUTHERN ALBERTA
COLLEGIATE INSTITUTE



SOUTHERN ALBERTA
COLLEGIATE INSTITUTE

COLLEGIATE PROGRAMMING

Collegiates provide specialized programming in a particular subject area, in order to provide students clearer pathways into post-secondary education and careers in their chosen field.

Lethbridge Polytechnic and its lineup of trades, agriculture and health Dual Credit programming are part of a unique collegiate founded in 2023 with various Zone 6 school divisions.

SOUTHERN ALBERTA COLLEGIATE INSTITUTE

Lethbridge Polytechnic



The Southern Alberta Collegiate Institute (SACI) is a unique collaborative partnership of six school divisions, Lethbridge Polytechnic and two non-profit organizations to give youth across Southern Alberta the opportunity to explore career pathways through exploratory and dual credit programming in Trades, Agriculture and Healthcare sectors.

Eligibility

Only students from the following school divisions are eligible to participate in SACI programming:

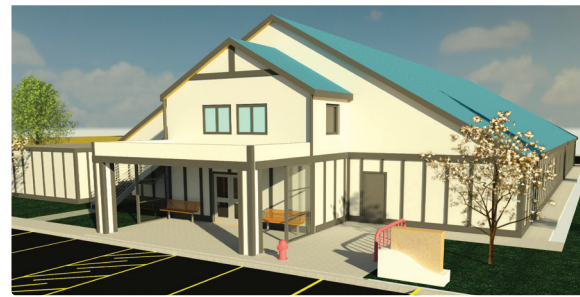
- Holy Spirit
- Horizon
- Lethbridge
- Livingstone Range
- Palliser
- Westwind

Course Offerings:

The following Dual Credit courses are reserved for SACI partners:

- AGS1150 - Foundations of Agriculture
- TRA1131 - Introduction to the Trades
- TRA1132 - Introduction to Transportation Trades
- TRA1133 - Introduction to Electrical Trades
- TRA1134 - Introduction to Construction Trades
- TRA1135 - Introduction to Culinary Trades

Students enrolled in SACI courses participate in a combination of online asynchronous learning and hands-on labs in our state-of-the-art facilities, on a selection of Fridays throughout the semester.



Program Offerings:

Also reserved for SACI partners, pre-employment programs require students to attend a combination of in-person lectures and labs, full-time for a 15 week period:

- Pre-Employment Carpentry
- Pre-Employment Electrical
- Pre-Employment Pipe Trades
- Pre-Employment Welding

Students participating in Dual Credit pre-employment programming will attend classes as part of a mixed-cohort, alongside general polytech students.

Facility:

While programming currently takes place in existing shop and lab spaces on-campus, plans are underway to construct a facility entirely for SACI programming, to be completed in the 2024/2025 academic year.

> WHAT IS DUAL CREDIT?

In Alberta, Dual Credit programming invites high school students in Grades 10-12 to take approved post-secondary courses and programs, earning them credit at both levels. When taking a Dual Credit with Lethbridge Polytechnic, students are considered both a high school AND post-secondary student.

Dual Credit programming is an excellent way for to:

- Experiment with subjects that might not be available at your school.
- Learn more about the polytech learning experience and environment.
- Meet new people and join our community.
- Earn credit in courses for application in future studies.
- Connect with advisors to plan your future post-secondary studies.

ADDITIONAL OFFERINGS

In addition to SACI specific courses and programs, Lethbridge Polytechnic has over 40 Dual Credit courses approved by Alberta Education. As we continue to build new and exciting pathways for learners, additional courses are also at various stages in the application process.

Courses and programs are selected to run as Dual Credit based on a number of factors, including student interest and format flexibility. If you have a course or area of interest you'd like to see more programming options, please contact our team to discuss, as we are always looking to add to the lineup.

Please visit lethpolytech.ca/dualcredit to view a complete list of courses.

> GETTING STARTED

STEP 1 - TALK TO YOUR SCHOOL

- As tuition is sponsored by divisions, the first step in the process requires students to discuss their eligibility and internal application process at the division level.
- Please note, Dual Credit seats are limited per division and openings may differ.

STEP 2 - APPLY TO POLYTECHNIC

- Once students have been approved to take a Dual Credit course by their division, they will apply as an open studies student to Lethbridge Polytechnic. Students applying for a Dual Credit program will choose a pre-employment option instead of open studies.
- A promo code will be provided to students through division Dual Credit contacts in order to waive the application fee. Please note, pre-employment students must use a different code.

STEP 3 - BE READY

- Upon acceptance, students will receive official communication to the email used to apply. Acceptance packages will include information on how to access Lethbridge Polytechnic emails, course materials on Canvas and important contacts on the Dual Credit journey.
- Students should monitor Canvas and email accounts for important communication from instructors.

Q & A

HOW ARE OFFERINGS ORGANIZED?

- Course and programs overviews are listed in this document alphabetically by course code and are not based on trade groupings.

WHAT DOES “DELIVERY METHOD” MEAN?

- Introduction courses are delivered using a blended model; theory work is tackled online asynchronously, before coming to campus to participate in hand-on labs. As long as deadlines are met, students can complete work at a time that works best for their schedules. Attendance at in-person labs is mandatory.
- Pre-Employment programs take place on campus and students are expected to attend in-person classes daily for the duration of the semester.

WHAT ARE COURSE “PRE-REQUISITES”?

- Some courses have entrance requirements to ensure students have the necessary experience to set themselves up for success with course content and assessments.
- If students are unsure whether they meet a course’s pre-requisites, please contact our team.

SHOULD I PURCHASE REQUIRED EQUIPMENT AND MATERIALS NOW?

- This package is meant to provide students, parents and schools with the most accurate information on Dual Credit offerings and processes at the time of distribution; however, content is subject to change. Please wait to purchase any required equipment and materials until confirmed closer to the start of your course or program.
- All courses require computer and Internet access.

WHO CAN I CONTACT WITH QUESTIONS?

- Contact information for relevant departments is located on the last page of this document.

2024/2025 OFFERING SCHEDULE

Course	Fall	Winter
AGS1100 - Foundations of Agriculture		✓
TRA1131 - Introduction to the Trades	✓	✓
TRA1132 - Introduction to Transportation Trades		✓
TRA1133 - Introduction to Electrical Trades	✓	
TRA1134 - Introduction to Construction Trades	✓	
TRA1135 - Introduction to Culinary Trades		✓
Program		
Pre-Employment Carpentry Program		✓
Pre-Employment Electrical Program	✓	✓
Pre-Employment Pipe Trades Program	✓	✓
Pre-Employment Welding Program	✓	✓

APPLICATION DEADLINES

Dual Credit courses and programs are scheduled to run in both the fall and winter semesters.

The following deadlines allow our teams adequate time to allocate seats and to prepare for students' arrival:

Deadline	Date
Fall Semester Applications	June 14, 2024
Winter Semester Applications	Nov. 29, 2024

SACI SEMESTER DATES

In order to best accommodate course and program lab dates, SACI semesters differ slightly from general dual credit or Lethbridge Polytechnic semester dates. Please refer to specific dates on the following page for the most up-to-date info.

Please review the following SACI semester dates:

Semester	First Day	Last Day
Fall	Sept. 3, 2024	Dec. 13, 2024
Winter	Feb. 3, 2025	May 16, 2025

WN25 SCHEDULE EXPECTATIONS

Introductory trades courses are delivered in a blended format - theory content will be covered online asynchronously and lab work will take place on campus in a series of predetermined Friday dates that have been approved by both the polytech and school divisions.

Registered students are required to attend all on campus sessions - failure to attend may result in removal from the course. For students who will miss any regularly scheduled high school classes on the specified dates, arrangements can be made with the school.

Here are the dates of mandatory on-campus sessions. Please note, these may differ based on course offering:

INTRODUCTION TO THE TRADES TRA1131

- Feb. 7, 2025 (*orientation*)
- Feb. 14, 2025
- Mar. 7, 2025
- Mar. 14, 2025
- Mar. 21, 2025
- Mar. 28, 2025
- Apr. 4, 2025
- Apr. 11, 2025
- May 2, 2025 (*presentations*)

INTRODUCTION TO TRANSPORTATION TRA1132

- Feb. 7, 2025 (*orientation*)
- Feb. 14, 2025
- Feb. 28, 2025
- Mar. 7, 2025
- Mar. 14, 2025
- Mar. 21, 2025
- Apr. 4, 2025
- May 9, 2025

INTRODUCTION TO CULINARY TRA1135

- Feb. 14, 2025 (*orientation*)
- Feb. 28, 2025
- Mar. 7, 2025
- Mar. 14, 2025
- Mar. 21, 2025
- Apr. 11, 2025
- May 2, 2025

TRA1131/TRA1132/TRA1135 labs take place on Fridays, from 9 a.m. to 4 p.m. at Lethbridge Polytechnic.

Pre-employment programs are delivered entirely on campus, with a blend of lab and lecture courses. Students will be required to attend classes daily for a semester, following a program-specific schedule provided through their Lethbridge Polytechnic account upon enrollment. Consistent failure to attend classes may result in removal from the program.

Pre-Employment programs consist of five or six courses that run for fifteen weeks:

PRE-EMPLOYMENT PROGRAMS CARPENTRY, ELECTRICAL, PIPE TRADES + WELDING

- Daily on-campus attendance
- Starts Feb. 3, 2025
- Ends May 16, 2025

PPE REQUIREMENTS

Students will require personal protective equipment in order to participate in labs, which may include:

- Steel-toe boots
- Safety glasses
- Coveralls
- Hearing protection

Please note, students enrolled in TRA1131 will be provided PPE, free of charge. Students in pre-employment programs will require an additional list of equipment and materials, outlined in the official welcome letter.

AGS1100 - FOUNDATIONS IN AGRICULTURE

Offered in the Winter semester

Delivery Method: Online asynchronous + several on-campus labs

Total Hours: 75

Post-Secondary Credits: 3

High School Credits: 5

Pre-Requisites: None

Materials Cost: None

Lab Schedule: TBD

Course Description:

An introduction to the primary agriculture industries in Southern Alberta including agronomy, animal science and agriculture business. Discussions and projects will include identification of basic agriculture science and economic principles, interaction between industries and evolving career opportunities.

Course Outcomes:

1. Explain the role of agriculture in maintaining environmental soundness and sustainability including land usage, energy, water, and soil.
2. Explain the impact of agriculture management practices on plants and plant health as well as animals and animal welfare.
3. Compare food and agriculture commodities produced in southern Alberta including composition, nutrients, food safety, security, and processing techniques.
4. Examine agriculture technologies, including automation, robotics, biotechnology, precision agriculture, and genetics.

Assessments:

- Lab Assignments
- Quizzes
- Exams

Required Equipment & Materials:

- None

Transferability:

- *Approved Elective for:* General Arts and Sciences
- *External Transfer Equivalent at:* No transfer opportunities offered at this time.

PSI Code:

- *PSI3319*

TRA1131 - INTRODUCTION TO THE TRADES

Offered in the Fall + Winter semesters

Delivery Method: Online asynchronous + on-campus labs

Total Hours: 75

Post-Secondary Credits: 3

High School Credits: 5

Pre-Requisites: None

Materials Cost: \$250 (approx.)

Course Description:

As an introductory course, students will explore and experience 12 trades including plumber, welder, carpenter, electrician, power line technician, wind turbine technician, automotive technician, heavy equipment technician, agricultural heavy equipment technician, parts technician, cook and baker. Students will participate in both online knowledge-based work complemented with a hands-on component to developing key skills in each specific trade. This course will develop students' appreciation for trades and give them a better understanding of their own aptitude and interests.

Course Outcomes:

1. Recognize their own aptitude and interests within the trades.
2. Demonstrate an introductory understanding of each individual trade.
3. Apply basic safety practices within each trade.
4. Apply knowledge of each trade skill set to lab situations.
5. Apply knowledge of tools to a lab situation.

Assessments:

- Quizzes
- Labs (*Nine Fridays throughout the semester - subject to change*)
- Portfolio

Required Equipment & Materials:

- Coveralls
- CSA-approved safety shoes/boots
- Safety glasses

Transferability:

- *Approved Elective for:* General Arts and Sciences
- *External Transfer Equivalent at:* No transfer opportunities offered at this time.

PSI Code:

- *PSI3310*

TRA1132 - INTRODUCTION TO TRANSPORTATION TRADES

Offered in the Winter semester

Delivery Method: Online asynchronous + on-campus labs

Total Hours: 76

Post-Secondary Credits: 3

High School Credits: 5

Pre-Requisites: None

Materials Cost: \$250 (approx.)

Course Description:

Students will explore automotive, heavy-duty, agriculture equipment, and parts trades. Students will participate in both online knowledge-based work, complemented with a hands-on component to developing key skills in each specific trade. This course will develop students' appreciation for automotive, heavy-duty, agriculture equipment, and parts trades, giving them a refined understanding of their own aptitude and interests.

Course Outcomes:

1. Evaluate your own aptitude and interests within automotive, heavy-duty, agriculture equipment and parts trades.
2. Demonstrate awareness of automotive, heavy-duty, agriculture equipment and parts trades environments.
3. Apply safe work practices within automotive, heavy-duty, agriculture equipment and parts trades.
4. Apply knowledge of automotive, heavy-duty, agriculture equipment and parts trades occupational skill sets to lab situations.
5. Apply knowledge of tools to automotive, heavy-duty, agriculture equipment and parts trades.
6. Recognize the relationship between automotive, heavy duty, agriculture equipment and parts trades.

Assessments:

- Quizzes
- Labs (*Eight Fridays throughout the semester - subject to change*)
- Assignments
- Discussions
- Portfolio

Required Equipment & Materials:

- Coveralls
- CSA-approved safety shoes/boots
- Safety glasses

Transferability:

- *Approved Elective for:* General Arts and Sciences
- *External Transfer Equivalent at:* No transfer opportunities offered at this time.

PSI Code:

- *PSI3315*

TRA1133 - INTRODUCTION TO ELECTRICAL TRADES

Offered in the Fall semester

Delivery Method: Online asynchronous + on-campus labs

Total Hours: 60

Post-Secondary Credits: 3

High School Credits: 5

Pre-Requisites: None

Materials Cost: \$200 (approx.)

Course Description:

Students will explore electrical and wind turbine technician trades. Students will participate in online knowledge-based work, complemented with a hands-on component to developing key skills in each specific trade. This course will develop students' appreciation for electrical and wind turbine technician trades, giving them a refined understanding of their own aptitude and interests.

Course Outcomes:

1. Evaluate your own aptitude and interests within electrical and wind turbine technician trades.
2. Demonstrate awareness of electrical and wind turbine technician trades environments.
3. Apply safe work practices within electrical and wind turbine technician trades.
4. Apply knowledge of electrical and wind turbine technician trades occupational skill sets to lab situations.
5. Apply knowledge of tools to electrical and wind turbine technician trades.

Assessments:

- Quizzes
- Labs (*Eight Fridays throughout the semester - subject to change*)
- Assignments
- Discussions
- Portfolio

Required Equipment & Materials:

- Gloves
- CSA-approved safety shoes/boots
- Safety glasses

Transferability:

- *Approved Elective for:* General Arts and Sciences
- *External Transfer Equivalent at:* No transfer opportunities offered at this time.

PSI Code:

- *PSI3318*

TRA1134 - INTRODUCTION TO CONSTRUCTION TRADES

Offered in the Fall semester

Delivery Method: Online asynchronous + on-campus labs

Total Hours: 70

Post-Secondary Credits: 3

Pre-Requisites: None

Materials Cost: \$250 (approx.)

Course Description:

Students will explore carpentry, welding and pipetrades. Students will participate in both online knowledge-based work, complemented with a hands-on component to developing key skills in each specific trade. This course will develop students' appreciation for carpentry, welding, and pipetrades trades, giving them a refined understanding of their own aptitude and interests.

Course Outcomes:

1. Evaluate your own aptitude and interests within carpentry, welding and pipetrades.
2. Demonstrate awareness of carpentry, welding and pipetrades environments.
3. Apply safe work practices within carpentry, welding and pipetrades.
4. Apply knowledge of carpentry, welding and pipetrades occupational skill sets to lab situations.
5. Apply knowledge of tools to carpentry, welding and pipetrades.

Assessments:

- Quizzes
- Labs (*Eight Fridays throughout the semester - subject to change*)
- Assignments
- Discussions
- Portfolio

Required Equipment & Materials:

- Coveralls
- CSA-approved safety shoes/boots
- Safety glasses

Transferability:

- *Approved Elective for:* General Arts and Sciences
- *External Transfer Equivalent at:* No transfer opportunities offered at this time.

PSI Code:

- *PSI3316*

TRA1135 - INTRODUCTION TO CULINARY TRADES

Offered in the Winter semester

Delivery Method: Online asynchronous + on-campus labs

Total Hours: 74

Post-Secondary Credits: 3

High School Credits: 5

Pre-Requisites: None

Materials Cost: None

Course Description:

Students will explore the culinary field through different thematic culinary experiences. Students will participate in both online knowledge-based work, complemented with a hands-on component to developing key skills in each specific trade that are applicable to everyday life. This course will develop students' appreciation for culinary trades, refining their own skills, aptitude, and interests.

Course Outcomes:

1. Evaluate your own aptitude and interests within cooking and baking trades.
2. Demonstrate awareness of cooking and baking trades environments.
3. Apply safe work practices when cooking and baking.
4. Apply knowledge of cooking and baking trades occupational skill sets in lab situations.
5. Apply knowledge of equipment when cooking and baking

Assessments:

- Quizzes
- Labs (*Seven Fridays throughout the semester - subject to change*)
- Assignments
- Discussions
- Portfolio

Required Equipment & Materials:

- None

Transferability:

- *Approved Elective for:* General Arts and Sciences
- *External Transfer Equivalent at:* No transfer opportunities offered at this time.

PSI Code:

- *PSI3317*

PRE-EMPLOYMENT CARPENTRY PROGRAM

Offered in the Winter semester

Delivery Method: On-campus lectures + labs

Length of Program: 15 weeks

Post-Secondary Credits: 19

High School Credits: 15 CTS

Pre-Requisites: English 10-2 + Math 10-3

Materials Cost: \$450 *(approx.)*

Program Description:

This program is an introduction to the fundamentals of carpentry, including aspects of important safety practices, building materials, common tools, foundation and support systems, and more. With a combination of theoretical knowledge and hands-on experience, students will gain skills for a successful career in carpentry. This program covers all first-year carpentry apprentice material, as well as a two-week practicum placement with an industry partner to prepare students to enter the workforce.

Courses:

1. CRP1100: Safety and Building Materials *(3hrs/week)*
2. CRP1101: Tools *(8hrs/week)*
3. ECRP1102: Site Preparation *(8hrs/week)*
4. ECRP1103: Estimating and Drawing *(6hrs/week)*
5. CRP1104: Practicum Placement *(2 weeks)*

Assessments:

- Quizzes
- Exams
- Projects
- Labs
- Practicum Evaluation

Required Equipment & Materials: *(to be confirmed)*

- Apprenticeship first period Carpentry ILM Package
- Drafting Supplies
- SHARP-520XT calculator
- Safety glasses
- CSA-approved safety shoes/boots

Certificate

- Upon program completion, students will receive a Pre-Carpentry Certificate and be eligible to write the first period apprenticeship exam. Successful completion of the exam will provide credit for first period technical training.

Transferability:

- Upon receiving credit for first period technical training, students can pursue a full apprenticeship program with Lethbridge Polytechnic or other accredited Albertan post-secondaries.

CTS Course Equivalents:

- *CRA3900, CRA3402, CRA3407, CRA3412, CRA3417, CRA3422, CRA3427, CRA3432, CRA3437, CRA3442, CRA3447, CRA3452, CRA3457, CRA3462 + CRA3467.*

PRE-EMPLOYMENT ELECTRICAL PROGRAM

Offered in the Fall + Winter semester

Delivery Method: On-campus lectures + labs

Length of Program: 15 weeks

Post-Secondary Credits: 19

High School Credits: 15 CTS

Pre-Requisites: English 20-2, Math 20-3 + Science 10

Materials Cost: \$450 (approx.)

Program Description:

This program is an introduction to the fundamentals of the electrical trade, including aspects of important safety legislation, principles of electromotive force, circuit tests and repairs, the Canadian Electrical code and more. With a combination of theoretical knowledge and practical application, students will gain skills for a successful electrical career. This program covers all first-year electrical apprentice material, as well as a two-week practicum placement with an industry partner to prepare students to enter the workforce.

Courses:

1. ELT1100: Workplace safety (2hrs/week)
2. ELT1101: Circuit Fundamentals (10hrs/week)
3. ELT1102: Lab Fundamentals (6hrs/week)
4. ELT1103: Electrical Code and Drawings (6hrs/week)
5. ELT1104: Practicum Placement (2 weeks)

Assessments:

- Quizzes
- Exams
- Labs
- Practicum Evaluation

Required Equipment & Materials: (to be confirmed)

- Apprenticeship first period Electrician ILM Package
- Electrical Code Book
- SHARP-520XT calculator
- Safety glasses
- Ruler

Certificate

- Upon program completion, students will receive a Pre-Electrical Certificate and be eligible to write the first period apprenticeship exam. Successful completion of the exam will provide credit for first period technical training.

Transferability:

- Upon receiving credit for first period technical training, students can pursue a full apprenticeship program with Lethbridge Polytechnic or other accredited Albertan post-secondaries.

CTS Course Equivalents:

- ETA3900, ETA3400, ETA3405, ETA3410, ETA3415, ETA3420, ETA3425, ETA3430, ETA3435, ETA3440, ETA3445, ETA3450, ETA3455, ETA3460 + ETA3465.

PRE-EMPLOYMENT PIPE TRADES PROGRAM

Offered in the Fall + Winter semester

Delivery Method: On-campus lectures + labs

Length of Program: 15 weeks

Post-Secondary Credits: 19

High School Credits: 15 CTS

Pre-Requisites: English 20-2, Math 20-3 + Science 10

Materials Cost: \$450 *(approx.)*

Program Description:

This program is an introduction to the fundamentals of pipe trades, including aspects of important safety legislation, effective tool usage, welding basics, drawing concepts, scientific principles and more. With a combination of theoretical knowledge and practical application, students will gain skills for a successful career in the pipe trades. This program covers all first-year pipe trades apprentice material, as well as a two-week practicum placement with an industry partner to prepare students to enter the workforce.

Courses:

1. PTR1100: Workplace Safety and Rigging *(3hrs/week)*
2. PTR1101: Tools, Equipment and Materials *(9hrs/week)*
3. PTR1102: Metal Fabrication *(5 hrs/week)*
4. PTR1103: Drawing and Specifications *(3hrs/week)*
5. PTR1104: Calculations and Science *(5hrs/week)*
6. PTR1105: Practicum Placement *(5hrs/week)*

Assessments:

- Quizzes
- Exams
- Labs
- Calculations
- Practicum Evaluation

Required Equipment & Materials: *(to be confirmed)*

- Apprenticeship first year GAS (Gas Fitting) PLU ILM package
- IPT Pipe Trade's Handbook
- Casio Fx-260 calculator
- Architectural and metric rulers
- Safety glasses
- CSA-approved safety shoes/boots

Certificate

- Upon program completion, students will receive a Pre-Pipe Trades Certificate and be eligible to write the first period apprenticeship exam. Successful completion of the exam will provide credit for first period technical training.

Transferability:

- Upon receiving credit for first period technical training, students can pursue a full apprenticeship program with Lethbridge Polytechnic or other accredited Albertan post-secondaries.

CTS Course Equivalents:

- PLA3900, PLA3406, PLA3411, PLA3416, PLA3421, PLA3426, PLA3431, PLA3436, PLA3441, PLA3446, PLA3451, PLA3456, PLA3461, PLA3466 + PLA3471.

PRE-EMPLOYMENT WELDING PROGRAM

Offered in the Fall + Winter semester

Delivery Method: On-campus lectures + labs

Length of Program: 15 weeks

Post-Secondary Credits: 19

High School Credits: 15 CTS

Pre-Requisites: English 10-2 + Math 10-3

Materials Cost: \$600 (approx.)

Program Description:

This program is an introduction to the fundamentals of the welding trade, including aspects of safety protocol, electrical concepts, common weld styles, math principles and more. With a combination of theoretical knowledge and practical application, students will gain skills for a successful welding career. This program covers all first-year welding apprentice material, as well as a two-week practicum placement with an industry partner to prepare students to enter the workforce.

Courses:

1. WDG1100: Workplace Safety and Tools (5hrs/week)
2. WDG1101: Properties of Metal (6hrs/week)
3. WDG1102: Welding Process (10 hrs/week)
4. WDG1103: Welding Trade Math (3hrs/week)
5. WDG1104: Practicum Placement (2 weeks)

Assessments:

- Quizzes
- Labs
- Exams
- Assignments
- Practicum Evaluation

Required Equipment & Materials: (to be confirmed)

- 1st Period ILM Welding package
- IPT Metal Trades Handbook
- Casio FX-260 calculator
- Safety glasses
- CSA-approved safety shoes/boots
- Coveralls
- Medium duty welding gloves
- Welding helmet

Certificate

- Upon program completion, students will receive a Pre-Welding Certificate and be eligible to write the first period apprenticeship exam. Successful completion of the exam will provide credit for first period technical training.

Transferability:

- Upon receiving credit for first period technical training, students can pursue a full apprenticeship program with Lethbridge Polytechnic or other accredited Albertan post-secondaries.

CTS Course Equivalents:

- WDA3900, WDA3401, WDA3403, WDA3406, WDA3407, WDA3408, WDA3411, WDA3413, WDA3415, WDA3420, WDA3423, WDA3427, WDA3429, WDA3432 + WDA3437.

AUTOMOTIVE SERVICE TECHNICIAN APPRENTICESHIP

Offered in the Spring semester

Delivery Method: On-campus lectures + labs

Length of Program: 8 weeks

Schedule: May 5 to June 27, 2025

High School Credits: 15 CTS

Pre-Requisites: English 20-2, Math 20-3 + Science 10

Materials Cost: \$800 (*approx.*)

Program Description:

This program prepares students for a career in the automotive industry, with a mix of on-the-job training, technical experience and theory, as they learn from skilled instructors and train on industry-standard equipment. This program covers all first-year automotive apprentice materials, and preps students to enter the workforce.

Certificate

- Upon program completion, students will write the first-period apprenticeship exam. Successful completion of the exam will provide credit for first-period technical training.

Transferability:

- Upon receiving credit for first period technical training, students can pursue a full apprenticeship program.

CTS Course Equivalents:

- ASA3400, ASA3402, ASA3405, ASA3410, ASA3412, ASA3415, ASA3420, ASA3425, ASA3430, ASA3435, ASA3440, ASA3445, ASA3450, ASA3452 + ASA3900

HEAVY EQUIPMENT TECHNICIAN APPRENTICESHIP

Offered in the Spring semester

Delivery Method: On-campus lectures + labs

Length of Program: 8 weeks

Schedule: May 5 to June 27, 2025

High School Credits: 15 CTS

Pre-Requisites: English 20-2, Math 20-3 + Science 10

Materials Cost: \$800 (*approx.*)

Program Description:

This program prepares students for a career in the heavy equipment industry, with a mix of on-the-job training, technical experience and theory, as they learn from skilled instructors and train on industry-standard equipment. This program covers all first-year heavy equipment apprentice materials, and preps students to enter the workforce.

Certificate

- Upon program completion, students will write the first-period apprenticeship exam. Successful completion of the exam will provide credit for first-period technical training.

Transferability:

- Upon receiving credit for first period technical training, students can pursue a full apprenticeship program.

CTS Course Equivalents:

- HEA3400, HES3405, HEA3410, HEA3415, HEA3420, HE3425, HEA3430, HEA3435, HEA3440, HEA3445, HEA3450, HEA3455, HEA3460, HEA3465 + HEA3900

> HAVE QUESTIONS?

ABOUT ELIGIBILITY, SCHEDULE + GEAR?

Want to discuss:

- Required equipment
- Lab schedules
- Division pre-requisites

Contact: **Collegiate Coordinator**

Cheryl Zumbach • cheryl.zumbach@southernalbertacollegiateinstitute.ca

ABOUT DUAL CREDIT PROGRAMMING?

Looking for information on:

- Course applications/registrations
- Dropping/withdrawing from a course
- Content on the Dual Credit Student Hub Canvas community
- Future Dual Credit offerings
- Anything else you can't find the answer for!

Contact: **Dual Credit Team**

dual.credit@lethpolytech.ca • 403.320.3200 Ext. 5656